

**Do you like spectacular,
unique finishes?**

Create a range of different surface finishes with
Baumit CreativTop and Design products.

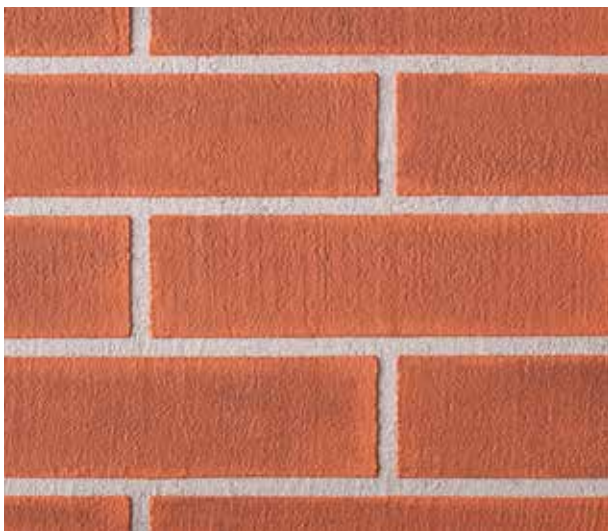
**Baumit
Creative
Façade
Design**



Baumit
baumit.com



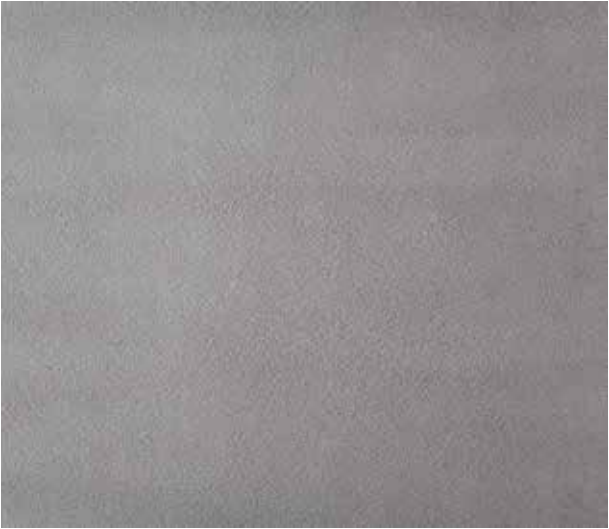
Brick



- Prepare the substrate with UniPrimer primer and leave to dry for 24 hours.
- Apply CreativTop Fine in 2 mm thickness to the surface.
- Once dry, apply the brick template to the surface and apply CreativTop in a brick colour to the surface to the thickness of the template.
- Carefully remove the template from the surface whilst the material is still wet.
- Applying Lasur to the surface will create an antique effect.
- Finally cover the surface with a coating of Baumit Finish, matt colourless seal.



Fine Concrete



- Prepare the substrate with UniPrimer primer and leave to dry for 24 hours.
- Apply CreativTop tinted in grey.
- Once dry, apply Lasur Mystic design paint to the surface with a damp sponge until you achieve the required look.
- Finally cover the surface with a coating of Baumit Finish, matt colourless seal.



Concrete



- Prepare the substrate with UniPrimer primer and leave to dry for 24 hours.
- Apply a grey coloured CreativTop Fine in 2 mm thickness to the surface.
- Once dry, apply a second coat of CreativTop Silk and smooth whilst wet in a vertical motion.
- Once the second coat is dry apply Lasur Mystic-coloured design paint, then wipe with a damp sponge.
- Finally cover the surface with a coating of Baumit Finish, matt colourless seal.



Rough Concrete



- Prepare the substrate with UniPrimer primer and leave to dry for 24 hours.
- Apply Gray CreativTop Fine Thin Scratch on approx. 2 mm thick, then form the structure with a crumpled nylon bag.
- Once dry, paint the surface with Metallic Titan paint.
- Once this layer is dry, lubricate the surface with Mystic Lasur using a damp sponge.
- Finally cover the surface with a coating of Baumit Finish, matt colourless seal.



Glitter



- Prepare the substrate with UniPrimer primer and leave to dry for 24 hours.
- Apply CreativTop Fine in the thickness of the grain and rub with a plastic trowel.
- Once dry, apply Baunit Glitter to the surface with a short-haired roller.



Wood



- Prepare the substrate with UniPrimer primer and leave to dry for 24 hours.
- Apply CreativTop Fine at a thickness of 1-2mm and then apply the wood effect template to the wet surface. After you have „pulled on” the material, remove the stencil and sand off the rows after drying.
- Cover the entire surface with Lasur Gentle and then smooth it with a damp sponge.
- Finally cover the surface with a coating of Baumit Finish, matt colourless seal.



**Rose
Gold**



- Prepare the substrate with UniPrimer primer and leave to dry for 24 hours.
- Apply a layer of CreativTop to a thickness of 2 mm, then using a cylindrical roller form the rough surface, and then smooth it back into spots.
- Once dry, apply two coats (two coats outdoors) of Metallic Bronze.
- Once dry apply Lasur Mystic with a damp sponge.
- Finally cover the surface with a coating of Baumit Finish, matt colourless seal.



Antique Stone



- Prepare the substrate with UniPrimer primer and leave to dry for 24 hours.
- Apply 1-2mm of CrativTopFine to the surface and smooth after 5-10minutes. (The joints are scratched if the material is not completely glued?)
- Once dry, apply Lasur Gentle and then remove.
- Repeat this step with Lasur Mystic.
- Finally cover the surface with a coating of Baumit Finish, matt colourless seal.



Metallic



- Prepare the substrate with UniPrimer primer and leave to dry for 24 hours.
- Apply CreativTop Silk modeling plaster evenly with a 10 mm serrated spatula and smooth. Apply another layer of CreativTop. Once dry sand the surface and dust off.
- Apply a final layer of CreativTop Silk approx. 1 mm thick. Once dry sand the surface and dust of.
- Apply Metallic Titanium in two coats as a finishing coat.



**Printed
Pattern**



- Prepare the substrate with UniPrimer primer and leave to dry for 24 hours.
- Apply CreativTop Fine evenly approx. 2 mm thick, then smooth.
- Once dry, apply more CreativTop Silk to the surface in patches and smooth it out from all directions.
- Once dry, sand the surface.
- Finish with Metallic Gold / Titanium as a finishing layer in two layers.



Brush Technique



- Prepare the substrate with UniPrimer primer and leave to dry for 24 hours.
- Apply CreativTop Fine to a thickness of 2 mm, pull the fresh material with a medium hardness brush (eg, with (eg with a synthetic wallpaper brush).
- Once dry, apply two coats with Metallic Ruby.