



*Quality application for an unrivaled finish*



*Baumit Through Colour Renders*  
***For beautifully  
designed façades***

OVERVIEW

# Baumit Tops & Colours



## Baumit NanoporTop & NanoporColor



- Perfect application
- Mineral and breathable
- Long lasting cleanliness

## Baumit StarTop & StarColor



- Especially strong & durable
- The best moisture protection
- Better workability

## Baumit PuraTop & PuraColor



- Brilliant colours
- Extremely durable
- For decorative surface design

self-cleaning	■	■	■	■	■
resistance	■	■	■	■	■
diffusion	■	■	■	■	■
colour variations	■	■	■	■	■
suitable for base area	■	■	■	■	■
variety of textures	■	■	■	■	■

self-cleaning	■	■	■	■	■
resistance	■	■	■	■	■
diffusion	■	■	■	■	■
colour variations	■	■	■	■	■
suitable for base area	■	■	■	■	■
variety of textures	■	■	■	■	■

self-cleaning	■	■	■	■	■
resistance	■	■	■	■	■
diffusion	■	■	■	■	■
colour variations	■	■	■	■	■
suitable for base area	■	■	■	■	■
variety of textures	■	■	■	■	■



self-cleaning	■	■	■	■	■
resistance	■	■	■	■	■
diffusion	■	■	■	■	■
colour variations	■	■	■	■	■
suitable for base area	■	■	■	■	■
colour intensity	■	■	■	■	■

self-cleaning	■	■	■	■	■
resistance	■	■	■	■	■
diffusion	■	■	■	■	■
colour variations	■	■	■	■	■
suitable for base area	■	■	■	■	■
colour intensity	■	■	■	■	■

self-cleaning	■	■	■	■	■
resistance	■	■	■	■	■
diffusion	■	■	■	■	■
colour variations	■	■	■	■	■
suitable for base area	■	■	■	■	■
colour intensity	■	■	■	■	■

Our topcoat render range provides an option for any and all application requirements. Each of our render products is designed with specific qualities in mind to ensure the highest quality finish, with simple application.

Baumit SilikonTop & SilikonColor	Baumit SilikatTop & SilikatColor	Baumit GranoporTop & GranoporColor	Baumit CreativTop & Lasur, Glitter, Metallic
			
			
<ul style="list-style-type: none"> <li>■ High coverage</li> <li>■ Premium protection</li> <li>■ Highly moisture &amp; weather resistant</li> </ul>	<ul style="list-style-type: none"> <li>■ Breathable</li> <li>■ Specialised for renovation</li> <li>■ Proven façade colour</li> </ul>	<ul style="list-style-type: none"> <li>■ Weatherproof</li> <li>■ Very good water repellency</li> <li>■ Easy application</li> </ul>	<ul style="list-style-type: none"> <li>■ Endless design possibilities</li> <li>■ Individual textures</li> <li>■ Creative, colourful and unique</li> </ul>
			
			
			



Baunit NanoporTop & NanoporColor

# Self-cleaning Effect

- Nanopor technology
- Microscopically smooth surface
- Long lasting beauty



By combining years of experience with the latest technology, Baunit developed the Baunit Nanopor series, consisting of NanoporTop, a ready-to-use render and NanoporColor façade paint. Their unique self-cleaning properties keeps façades looking like new for years.

### The Nanopor effect

The nanopor-effect is produced by Baunit NanoporTop whilst drying. It affects the upper hydrophilic nano layer.

If you put a drop of water on a normal hydrophobic render surface, it will appear as a 'ball' of water. A drop of water on Baunit NanoporTop loses its surface tension. Moisture is taken in to the upper hydrophilic layer. During evaporation, the moisture releases dirt particles resulting in a dry, clean and beautiful façade.

**NORMAL RENDER**

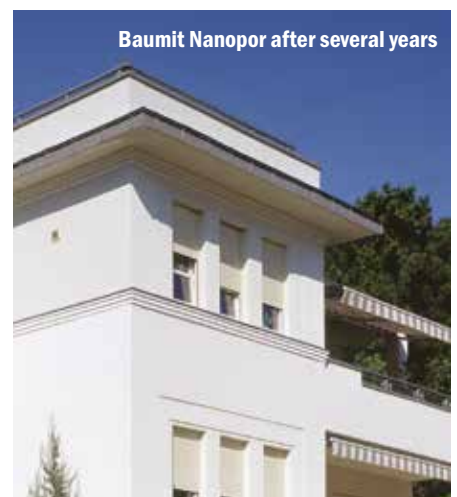
approx. 0.2mm

At this size, you can see that the surface of normal render is much rougher. This makes it easier for dirt particles to take hold.

**BAUNIT NANOPOR**

approx. 0.2mm

The microscopically smooth surface of Baunit NanoporTop Topcoat makes it hard for dirt particles to take hold.





Baumit StarTop & StarColor

# Ultimate Weather Resistance

- **Quick drying surface**
- **Increased protection against algae and mould**
- **Easy to apply**

The next generation of Baumit StarTop silicone resin render features a new filler. Its structure is similar to coral and has a large surface area with lots of tiny cavities and pores, resulting in a very quick and broad distribution of water lying on the surface.

### Easy to apply

StarTop is easy to apply and has a very uniform texture making it easier to work with. The ready-to-use render can be applied with little effort due to its workability.

### Hydrophobic and hydrophilic principles

The hydrophilic property and coral-like structure cause the moisture to spread out so the surface dries out more quickly after wet weather. The hydrophobic nature of the render provides water repellency, and therefore good water drainage. The combination of both functions results in surfaces with good dirt resistance.

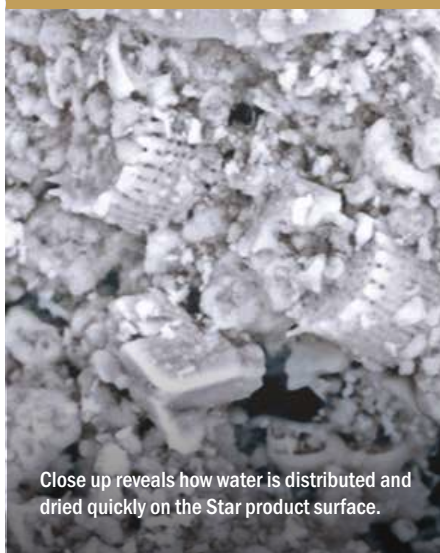


### EXPERT TIP

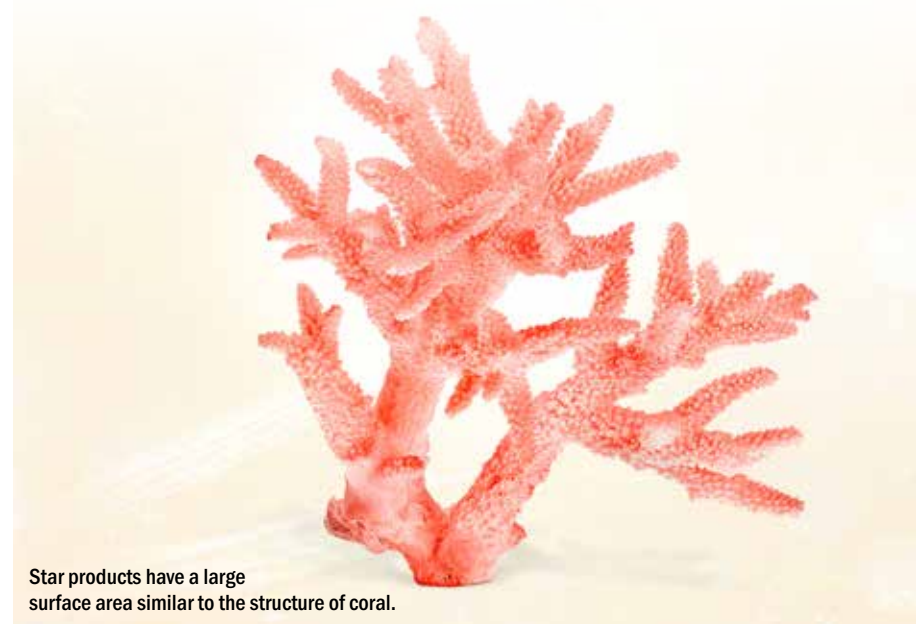


Available in all 12 exclusively selected "Shades of White" colour tones!

### MICROSCOPIC CLOSE UP



Close up reveals how water is distributed and dried quickly on the Star product surface.



Star products have a large surface area similar to the structure of coral.



Baumit PuraTop & PuraColor

# Bold Statement Colours

- Full range of colours
- Cooling pigment technology

Home owners and designers who want a strong colour scheme for façades have been restricted in the choice of colours up to now – mainly because dark shades fade and can heat up in the sun. However, the unique formulation of Baumit PuraTop and PuraColor means that using intense shades is possible. It defines a whole new generation of façade design, allowing virtually infinite possibilities in any colour.

stand out due to the bold colours which will give any façade an exceptional and very individual character. Incorporating innovative “cooling pigments” means they can also be applied over large areas on an external wall insulation system.



PuraTop and PuraColor are available in a range of unique, intense colour tones. The unique colours from the Baumit Pura range

## 94 UNIQUE PURATOP AND PURACOLOR COLOUR TONES

0021	0031	0041	0051	0061	0071	0081	0121	0131	0141	0151	0161	0171	0181
0191	0201	0211	0221	0231	0241	0281	0291	0301	0311	0321	0331	0341	0351
0361	0371	0381	0391	0401	0411	0421	0431	0441	0451	0461	0471	0481	0491
0501	0511	0521	0561	0571	0581	0591	0601	0611	0621	0631	0671	0681	0691
0701	0711	0721	0731	0741	0751	0761	0771	0781	0791	0831	0841	0851	0861
0871	0881	0891	0901	0911	0921	0931	0971	0981	0991	1001	1011	1021	1031
1041	1051	1061	1071	1111	1121	1131	1141	1151	1161				

The samples shown are intended as a colour guide for the product selected. It cannot be guaranteed that the colours of the materials supplied will be absolutely identical.



# Cooling Pigments

- Enables dark colours on EWI
- Reduced surface temperature
- Safety combined with top quality

Cooling pigments reflect a large proportion of the sunlight to which they are exposed, reducing surface temperature and making it possible to apply dark colours over an entire externally insulated surface.

The cooling pigments are mixed into our paints and renders during production, which means that all 888 Life colours can be applied over a large surface on an external wall insulation (EWI) system or masonry.



## How do Baumit render paints stay cool?

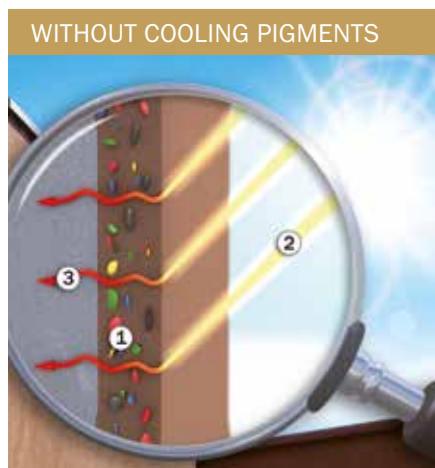
Where standard pigments absorb a large proportion of sunlight, cooling pigments reflect the sun's rays, reducing the surface temperature.

## BRV = Brightness Reference Value (HBW)

The Brightness Reference Value (BRV/HBW) expresses the brightness of a colour to the human eye compared to pure white (= HBW 100) or to deep black (=HBW 0).

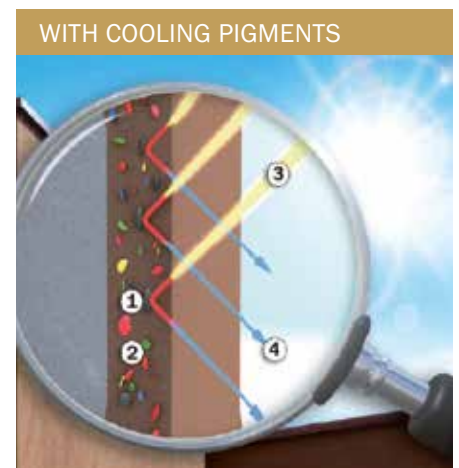
## TSR = Total Solar Reflectance

Where BRV takes into account the brightness of a colour to the human eye, TSR is concerned with the solar heating of the façade. The higher the TSR value, the more solar radiation is reflected and the lower the thermal heating of the surfaces is.



### Surface with CoolPigments

- ① Standard pigments
- ② Sunlight (light spectrum)
- ③ Non-reflected radiation, dissipated as heat into the subsurfaces



### Surface with Cooling Pigments

- ① Cooling Pigment
- ② Standard pigments
- ③ Sunlight (light spectrum)
- ④ Reflected sunlight



Baunit CreativTop

# Creative Textures

- **Unlimited design possibilities**
- **Wide range of individual textures**
- **Unique surfaces guaranteed**

The individual appearance of a façade does not only depend on its colour but also on its texture. Baunit CreativTop has been created to provide unlimited possibilities when it comes to texture. Formulated as a ready-to-use, silicone-based render it gives total design freedom. The different textures it can create, lend a mix of shade and light to the same rendered surface and thereby give the façade a depth that subtly changes from day to night and from season to season.

### Effective creativity

Because this versatile and easily applied render is available in nearly every colour from the Baunit Life colour range, there are endless creative combinations.

Baunit CreativTop is also available in **12 unique white tones**, including Baunit Star White, the whitest of the new Baunit **"Shades of White"** - Colour line.

Whether floated, dragged, combed or stippled, coarse or smooth – these and numerous other façade textures can now become a reality with Baunit CreativTop. So now you can not only choose the right colour but also the right texture for your walls.

### Improved recipe

The new recipe makes Baunit CreativTop easier to use and similar to StarTop it also guarantees a quick dry surface after fog or rain. Therefore, the risk of algae and mould infestation is reduced significantly.



### Smooth façades

Despite all the textures and colours available, there is always a need for smooth façades. Smooth façades are currently experiencing a comeback in international architecture. In southern and eastern Europe, smooth façades have always been the standard style. That is because these areas mostly work with renders, whereas masonry was the preferred material in the north and west. Architectural styles have always progressed from indoor to outdoor design and today all the possibilities for a craftsman-like interior design can now be applied to the façade.

In order to create a smooth finish to the façade Baunit offers 3 variants of CreativTop; Vario, Pearl and Silk.

### Smooth façades on EWI

You can also apply a smooth render finish to an EWI system. To achieve a perfectly smooth surface, start with a clean basecoat with the bonding of the EWI boards. The adhesive mortar, StarContact White, is ideal for this and CreativeTop Vario provides the perfect finish.







## Baumit SilikonTop and GranoporTop

# Classic Textures

- Coarse grain size for higher durability
- Scratched and rolled textures
- For each individual taste

The time when render served a purely functional role is long gone. Today's homeowners, architects and designers are placing ever greater demands on the visual appearance of living and working environments. Almost anything is possible: fine grain sizes create a discreet flair, while coarse grain sizes provide a certain rustic charm – especially when combined with a creative colour scheme.

### Scratched texture

A scratched texture is created by using precise quantities of render of certain grain sizes (1.5, 2.0 and 3.0mm). The so-called guide grain forms the basis for an even surface. This render uses rough broken textural grains. The render is applied in grain thickness and rubbed in with a float. The textural grains spread evenly and give a uniform even surface. This render is the easiest to apply, as the texture can only be affected to a certain extent by the movement.

### SURFACES THAT PROVIDE CHARACTER



### Rolled texture

Oversized grains in the sand mixture determine the overall thickness and depth of the grooves in the render layer. Depending on the technique used, this results in round, longitudinal or transverse textures. Rolled finish is a floated render, but its textural grain is generally round and a softer grooved texture is created by rubbing. By using round aggregate in the render, it is very easy to create grooved textures. Here, the render is applied in grain thickness and

then textured using a float. The movements of the float move the aggregate over the substrate, creating the grooves. By moving it in different directions – circular, horizontal, vertical or a mixture of these – it is possible to influence the texture. The more precise the movements, the more even the texture becomes. If several people are carrying out texturing work on the same façade, it is important to agree on the movement direction in order to avoid different-looking textures on one wall.



Baunit MosaikTop

# Ultimate protection



- **Decorative coloured quartz sand**
- **Natural stone effects**
- **Impact resistant and waterproof**



The plinth area of a façade is subjected to particularly high levels of stress as a result of dirt build up, mechanical strains and rainwater. Baunit MosaikTop is a paste-like stone render that is designed for wall surfaces that are subject to high levels of mechanical stress, such as the base area of the façade. It is highly water-repellent and is water vapour-permeable.

## Mosaik Natural Line

The new Mosaik Natural Line, consisting of 8 exclusive stone combinations, uses natural raw mineral flakes to provide a unique, natural and authentic stone look, which provides façades with a high level of quality and an exquisite appearance. At the same time, the proven Baunit MosaikTop characteristics, such as excellent water repellency, durability and great resilience, are retained.

The Baunit Natural Line offers the opportunity to bring natural accents to the façade. The colours range from a dark charcoal to a light sandstone look.



## Mosaik Essential Line

The classic Mosaik Essential Line consists of the most popular 22 colours. They are all coloured stone renders, based on pure acrylate. The colourful coated quartz sand that makes up Baunit MosaikTop, is particularly hard, robust and abrasion resistant. This makes Baunit MosaikTop the perfect final coating for heavily used base areas.

**MOSAİK – NATURAL LINE**

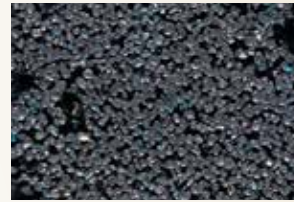
**M 337 Montblanc**

**M338 Olympus**

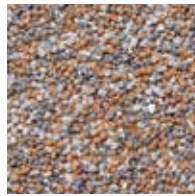
**M 339 Castle**

**M 340 Babia**

**M 341 Rocky**

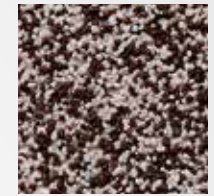
**M 342 Everest**

**M 343 Etna**

**M 344 Vesuvius**
**MOSAİK – ESSENTIAL LINE**

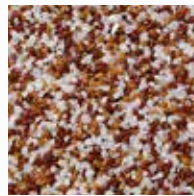
**M 301 Albaron**

**M 302 Monviso**

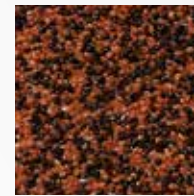
**M 303 Matterhorn**

**M 304 Denali**

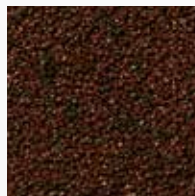
**M 305 Victoria**

**M 306 Parnass**

**M 307 Bistra**

**M 308 Kope**

**M 312 Cook**

**M 313 Athos**

**M 314 Ararat**

**M 315 Rodna**

**M 316 Kosh**

**M 317 El Capitan**

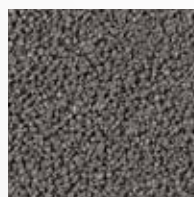
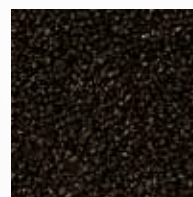
**M 318 Rax**

**M 325 Bellavista**

**M 326 Triglav**

**M 327 Rushmore**

**M 328 Durano**

**M 329 Cristallo**

**M 330 Elbrus**

**M 331 Nemrut**

All colour samples shown here serve as a visual orientation for the selected product. Slight deviations between the colours shown here, colour samples, colour folders, natural patterns and the materials provided can occur. The uniformity of colour and texture can only be guaranteed within one production batch.

# 888 Baunit Life colours

Baunit Life offers the most beautiful range of innovative render and paint colours for your façade. Research on the latest colour trends and extensive product development led to this unique collection. Baunit Life represents a new dimension in designing façades.

0014	0021	0031	0041	0051	0061	0071	0081	0121	0131	0141
0015	0022	0032	0042	0052	0062	0072	0082	0122	0132	0142
0016	0023	0033	0043	0053	0063	0073	0083	0123	0133	0143
0017	0024	0034	0044	0054	0064	0074	0084	0124	0134	0144
0018	0025	0035	0045	0055	0065	0075	0085	0125	0135	0145
0019	0026	0036	0046	0056	0066	0076	0086	0126	0136	0146
	0027	0037	0047	0057	0067	0077	0087	0127	0137	0147
	0028	0038	0048	0058	0068	0078	0088	0128	0138	0148
	0029	0039	0049	0059	0069	0079	0089	0129	0139	0149
0151	0161	0171	0181	0191	0201	0211	0221	0231	0241	0281
0152	0162	0172	0182	0192	0202	0212	0222	0232	0242	0282
0153	0163	0173	0183	0193	0203	0213	0223	0233	0243	0283
0154	0164	0174	0184	0194	0204	0214	0224	0234	0244	0284
0155	0165	0175	0185	0195	0205	0215	0225	0235	0245	0285
0156	0166	0176	0186	0196	0206	0216	0226	0236	0246	0286
0157	0167	0177	0187	0197	0207	0217	0227	0237	0247	0287
0158	0168	0178	0188	0198	0208	0218	0228	0238	0248	0288
0159	0169	0179	0189	0199	0209	0219	0229	0239	0249	0289
0291	0301	0311	0321	0331	0341	0351	1) 0361	1) 0371	1) 0381	1) 0391
0292	0302	0312	0322	0332	0342	0352	0362	2) 0372	2) 0382	2) 0392
0293	0303	0313	0323	0333	0343	0353	0363	0373	0383	0393
0294	0304	0314	0324	0334	0344	0354	0364	0374	0384	0394
0295	0305	0315	0325	0335	0345	0355	0365	0375	0385	0395
0296	0306	0316	0326	0336	0346	0356	0366	0376	0386	0396
0297	0307	0317	0327	0337	0347	0357	0367	0377	0387	0397
0298	0308	0318	0328	0338	0348	0358	0368	0378	0388	0398
0299	0309	0319	0329	0339	0349	0359	0369	0379	0389	0399
1) 0401	1) 0411	1) 0421	1) 0431	1) 0441	0451	0461	0471	0481	0491	0501
2) 0402	2) 0412	2) 0422	2) 0432	2) 0442	0452	0462	0472	0482	0492	0502
0403	0413	0423	0433	0443	0453	0463	0473	0483	0493	0503
0404	0414	0424	0434	0444	0454	0464	0474	0484	0494	0504
0405	0415	0425	0435	0445	0455	0465	0475	0485	0495	0505
0406	0416	0426	0436	0446	0456	0466	0476	0486	0496	0506
0407	0417	0427	0437	0447	0457	0467	0477	0487	0497	0507
0408	0418	0428	0438	0448	0458	0468	0478	0488	0498	0508
0409	0419	0429	0439	0449	0459	0469	0479	0489	0499	0509
1) 0511	1) 0521	0561	0571	1) 0581	1) 0591	0601	1) 0611	1) 0621	1) 0631	1) 0671
2) 0512	2) 0522	0562	0572	2) 0582	0592	0602	2) 0612	2) 0622	2) 0632	2) 0672
0513	0523	0563	0573	0583	0593	0603	0613	0623	0633	0673
0514	0524	0564	0574	0584	0594	0604	0614	0624	0634	0674
0515	0525	0565	0575	0585	0595	0605	0615	0625	0635	0675
0516	0526	0566	0576	0586	0596	0606	0616	0626	0636	0676
0517	0527	0567	0577	0587	0597	0607	0617	0627	0637	0677
0518	0528	0568	0578	0588	0598	0608	0618	0628	0638	0678
0519	0529	0569	0579	0589	0599	0609	0619	0629	0639	0679

● Priming with Baunit PremiumPrimer recommended (colored according to product data sheet).

The colors and patterns shown serve as a color guide for the selected product. Absolute color matching with the supplied material cannot be guaranteed.

1) Can be used over large areas with Baunit EWI Systems with an increased basecoat thickness (minimum thickness at least 5mm) or Baunit PowerFlex according to the product data sheet.

2) This color shade is also suitable over large-areas with Baunit EWI Systems with PuraTop and an increased basecoat thickness (minimum thickness at least 5mm) or Baunit PowerFlex according to the product data sheet.

## Behind the colour code

Each one of Baumit's unique façade colour shades has its own colour code. Consisting of 4 figures; the first 3 figures refer to the number of the colour row and the last number shows the brightness graduation (ranked from 1 to 9, where 1 stands for the most intense colour tone and 9 for the lightest one).

1) 0681	0691	0701	0711	0721	0731	0741	0751	0761	0771	0781
2) 0682	0692	0702	0712	0722	0732	0742	0752	0762	0772	0782
0683	0693	0703	0713	0723	0733	0743	0753	0763	0773	0783
0684	0694	0704	0714	0724	0734	0744	0754	0764	0774	0784
0685	0695	0705	0715	0725	0735	0745	0755	0765	0775	0785
0686	0696	0706	0716	0726	0736	0746	0756	0766	0776	0786
0687	0697	0707	0717	0727	0737	0747	0757	0767	0777	0787
0688	0698	0708	0718	0728	0738	0748	0758	0768	0778	0788
0689	0699	0709	0719	0729	0739	0749	0759	0769	0779	0789
0791	1) 0831	1) 0841	1) 0851	1) 0861	1) 0871	1) 0881	1) 0891	1) 0901	1) 0911	1) 0921
0792	0832	0842	0852	2) 0862	2) 0872	2) 0882	2) 0892	2) 0902	2) 0912	2) 0922
0793	0833	0843	0853	0863	0873	0883	0893	0903	0913	0923
0794	0834	0844	0854	0864	0874	0884	0894	0904	0914	0924
0795	0835	0845	0855	0865	0875	0885	0895	0905	0915	0925
0796	0836	0846	0856	0866	0876	0886	0896	0906	0916	0926
0797	0837	0847	0857	0867	0877	0887	0897	0907	0917	0927
0798	0838	0848	0858	0868	0878	0888	0898	0908	0918	0928
0799	0839	0849	0859	0869	0879	0889	0899	0909	0919	0929
1) 0931	1) 0971	0981	0991	1001	1011	1021	1031	1041	1051	1061
2) 0932	2) 0972	0982	0992	1002	1012	1022	1032	1042	1052	1062
0933	0973	0983	0993	1003	1013	1023	1033	1043	1053	1063
0934	0974	0984	0994	1004	1014	1024	1034	1044	1054	1064
0935	0975	0985	0995	1005	1015	1025	1035	1045	1055	1065
0936	0976	0986	0996	1006	1016	1026	1036	1046	1056	1066
0937	0977	0987	0997	1007	1017	1027	1037	1047	1057	1067
0938	0978	0988	0998	1008	1018	1028	1038	1048	1058	1068
0939	0979	0989	0999	1009	1019	1029	1039	1049	1059	1069
1071	1111	1121	1131	1141	1151	1161				
1072	1112	1122	1132	1142	1152	1162				
1073	1113	1123	1133	1143	1153	1163				
1074	1114	1124	1134	1144	1154	1164				
1075	1115	1125	1135	1145	1155	1165				
1076	1116	1126	1136	1146	1156	1166				
1077	1117	1127	1137	1147	1157	1167				
1078	1118	1128	1138	1148	1158	1168				
1079	1119	1129	1139	1149	1159	1169				

**White:** Available in any product

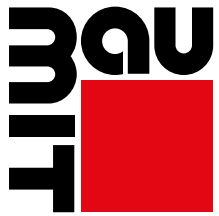
**Red:** Only available in PuraColor and PuraTop

**Blue:** Only available in PuraTop, PuraColor, StarTop, StarColor, GranoporTop, GranoporColor and CreativTop Max, Trend, Fine

## Baumit Shades of White

					
W1200 StarWhite	W1201 MineralWhite	W1202 CottonWhite	W1203 ChampagneWhite	W1204 LaceWhite	W1205 IvoryWhite
					
W1206 OpalWhite	W1207 AntiqueWhite	W1208 CeramicWhite	W1209 MagnoliaWhite	W1210 ShadowWhite	W1211 IceWhite

W1200 StarWhite is only available in StarTop/Color and CreativTop. All other white tones available in Baumit StarTop/Color, CreativTop and SilikonTop/Color.



baumit.com



## Baumit Ltd

t: +44 (0)1622 710 763  
e: [contact@baumit.co.uk](mailto:contact@baumit.co.uk)  
w: [baumit.co.uk](http://baumit.co.uk)

v01.2021

Unit 2 Westmead, New Hythe Lane,  
Aylesford, Maidstone, Kent, ME20 6XJ

**Baumit. Ideas with a future.**